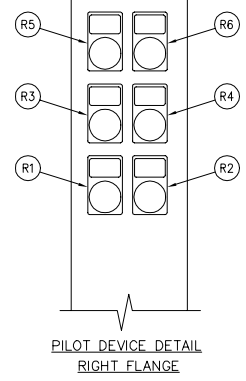
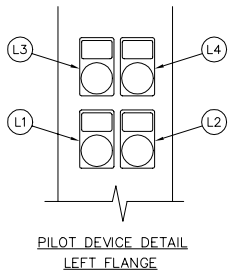


- PILOT DEVICE LEGEND**  
LEFT FLANGE
- L1. SWITCH IN EMERGENCY LIGHT
  - L2. PUSH TO TEST BUTTON
  - L3. SWITCH IN NORMAL LIGHT
  - L4. EMERGENCY ISO SW. OPEN LIGHT

- PILOT DEVICE LEGEND**  
RIGHT FLANGE
- R1. START PUSH BUTTON
  - R2. SOFT STOP PUSH BUTTON
  - R3. POWER ON LIGHT
  - R4. COAST STOP PUSH BUTTON
  - R5. PHASE REVERSAL LIGHT
  - R6. DRIVE FAULT LIGHT



VOLTAGE	HORSEPOWER
230V	300 HP.
460V	600 HP.

**NOTES:**  
ALL DIMENSIONS IN INCHES AND MILLIMETERS ([ ])

DRAWN SR 2-10-98 CHECK KH. 2-21-98 APPD J.C.B. 2-21-98	<b>METRON, INC.</b> DENVER, CO.		
		ENCLOSURE DIMENSIONS MODEL M700 WITH TRANSFER SWITCH 146.5" CABINET, 23" DEEP ELECTRIC FIRE PUMP CONTROLLER	CD32966A
		SCALE N.T.S.	SHEET 1 OF 1